

## Dehydrated Seaweeds

Algalithe <sup>®</sup> (Lithothamnium calcareum)	Haricot de Mer <sup>®</sup> (Himanthalia elongata)
Algovert <sup>®</sup> (Laminaria digitata)	Laitue de Mer (Ulva lactuca)
Ao Nori (Enteromorpha)	Lichen Carragheen (Chondrus crispus)
Ascopharm <sup>®</sup> (Ascophyllum nodosum)	Nori (Porphyra umbilicalis)
Chlorella	Salade de la Mer <sup>®</sup> (Palmaria/Porphyra/Ulva)
Dulse (Palmaria palmata)	Spirulina
Fucopharm <sup>®</sup> (Fucus vesiculosus)	Wakame (Undaria pinnatifida)

## Dehydrated Halophytes (Marine Plants)

Golden Samphire (Inula crithmoides) <b>New</b>	Sea Chamomile (Matricaria maritima) <b>New</b>
Organic Sea Fennel (Crithmum maritimum)	Sea Lavender (Limonium latifolium) <b>New</b>
Salicornia	Sea Thrift (Armeria maritima) <b>New</b>
Seakale (Crambe maritima) <b>New</b>	Silver Ragwort (Senecio cineraria) <b>New</b>
Sea Aster (Aster maritima) <b>New</b>	Sun drop (Oenothera biennis) <b>New</b>
Sea Beet (Beta maritima) <b>New</b>	Sweetfennel (Foeniculum vulgare) <b>New</b>
Sea Campion (Silene maritima) <b>New</b>	

## Halophyte Floral Water

Sea Fennel (Crithmum maritimum) **New**

## Natural ingredients

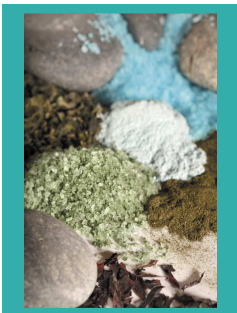
Atlantic Salt	White clay
Filtered Seawater	Limon Marin
Spray-Dried Seawater	Sédiments Marins
Green Clay	Oyster Shell powder
Pink Clay	Marine Magnesium
Red Clay	

## Natural Exfoliants

Algalithe <sup>®</sup> (Lithothamnium)	< 150µ
Fucopharm <sup>®</sup> (Fucus)	< 2mm
Haricot de Mer <sup>®</sup> (Himanthalia)	< 1,4mm
Lichen Carragheen (Chondrus)	< 2mm
Atlantic Fine Salt	< 800µ
Atlantic Coarse Salt	< 3mm
Oyster Shell powder	< 500µ

## Extracts

Ascophyllum Dry Extract (Ascophyllum nodosum)
Fucus Dry Extract (Fucus vesiculosus)
Lamivert <sup>®</sup> Aqueous Extract (Laminaria digitata)



## FACE APPLICATIONS – RINSE OFF

### Scrub

Marine scrub (Laminaria japonica/Chondrus crispus)

### Thalasso

Odycéane® – Purifying (Fucus vesiculosus/Lithothamnium calcareum/Laminaria digitata)

Slimming (Fucus vesiculosus/Ascophyllum nodosum/Lithothamnium calcareum)

Thalacéane® – Regenerating (Laminaria digitata/Lithothamnium calcareum/Fucus vesiculosus)

### Fango

Green Clay

Pink Clay

Red Clay

White Clay

Limon Marin

Sédiments Marins

### Phyto

Ayurvedic (Bamboo/Hibiscus/Patchouli/Water Lily)

### Inspire bases

Cream texture

Gel texture

Jelly texture

### Formulated Inspire Masks

2 in 1 Praline Cream mask (Almond)

Redensifying Cream mask (White Clay/Laracare® 200)

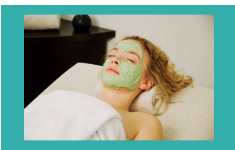
Anti-Ageing Modeling Gel mask (Sweet Almond Oil/Nyamplung Oil)

Exfoliating Mediterranean Gel mask (Apricot Kernel Oil/Blue Poppy Seeds)

Exfoliating Kiwi Jelly mask (Black Cumin Seeds/Kiwi)

Exfoliating Strawberry Jelly mask (Strawberry Seeds/Strawberry)

Exfoliating Vanilla Jelly mask (Conker Seeds/Vanilla)



# FACE APPLICATIONS – PEEL OFF

## Alginate Bases

@ Home

Classic

Creamy

Instant **New**

Organic **New**

Translucent

Gel **New**

## Formulated Masks

Anti-Acne (Cryogenic Ash Tree Buds extract)

Anti-Ageing (Laminaria digitata/Spirulina)

Botox-like (Argireline® – Myorelaxing)

Brightening\* (Biowhite® – Whitening)

Caviar (Caviar extract)

Espresso (Arabica Coffee extract)

Exfoliating (Papaya/Pineapple extract)

Eye Contour (Rice/Apricot Seed)

French Paradox (Grape Marc)

Fresh Complexion (Palmaria palmata)

Mild (Tea Tree oil/Pink Clay)

Oriental (Argan oil)

Organic Anti-Stress (Betaphroline® – Endorphin Stimulating) **New**

Organic Pollution Control (Apple extract) **New**

Purifying (Lithothamnium calcareum/Green Clay)

Rejuvenating (Cocoa)

Relaxing (Horse Chestnut Seed/Rosemary)

Stimulating (Ginseng)

Superhydrating (Aloe Vera)

Vitamin-Burst (Acerola)

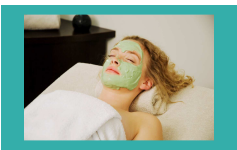
\*28 % melanin reduction-certified Brightening Peel Off Mask

## Activators

Peel Off Water (Alginate)

Source + (Bioplasma®)

Gel **New**



# BODY APPLICATIONS – RINSE OFF

## Scrub

Marine scrub (Laminaria digitata/Chondrus crispus)

Smooth Scrub from Bora Bora (Bora Bora sand/Vanilla/Monoï/Lava powder)

## Thalasso

Odycéane® – Purifying (Fucus vesiculosus/Lithothamnium calcareum/Laminaria digitata)

Red Polar – Cooling (Dulse/Chondrus crispus/Lithothamnium calcareum/Red Clay)

Slimming (Fucus vesiculosus/Ascophyllum nodosum/Lithothamnium calcareum)

Self-Heating (Lithothamnium calcareum/Laminaria digitata)

Thalacéane® – Regenerating (Laminaria digitata/Lithothamnium calcareum/Fucus vesiculosus)

Toning (Laminaria digitata/Lithothamnium calcareum/Sea Salt)

## Phyto

Ayurvedic (Bamboo/Hibiscus/Patchouli/Water Lily)

## Fango

Green Clay

Pink Clay

Red Clay

White Clay

Limon Marin

Sédiments Marins

## Mousse

Hot Chocolate Mousse (Laminaria digitata/Lithothamnium calcareum/Cocoa)

Slimming Thermoactive Mousse (Laminaria digitata/Lithothamnium calcareum)

## Balneo

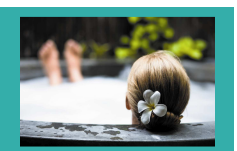
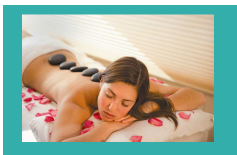
Emerald bath salts (Sea Salt/Laminaria digitata) **New**

Bora Bora bath salts (Sea Salt/Monoï) **New**

Zen effervescent bath pebbles (Donkey milk/Grape Seed oil) **New**

## Hair Care

Hair mask base **New**



### Alginate Peel Off Bases

Classic Base

Creamy Base

Organic **New**

### Formulated Alginate Wraps

Anti-Ageing (Laminaria digitata/Spirulina)

Bust-Firming (Ginkgo Biloba/Spirulina/Laminaria digitata/Menthol)

Cooling (Menthol)

Purifying (Lithothamnium calcareum/Green Clay)

Rejuvenating (Cocoa)

Slimming (Cocoa/Guarana)

Soothing (Limon Marin)

### Liquid Activators

Peel Off Water (Alginate)

Source + (Bioplasma®)

